

Making a Difference

2017 AG PROGRAM HIGHLIGHTS

- January – Brown County Youth Fair
Livestock / Wildlife Producer Meeting
Forage Seminar, Cross Plains – 87 Attended
Ag Increment Report – AG = \$47 million
- February – San Angelo Stock Show – 82 Livestock Entries
Demonstration – Weed Control in Coastal Hay Field
- March – Austin Stock Show
Adult Ag Day
- April – Pecan Program – Mills County
Kiawana's Club Program
Spring Brush Control Tour
Lunch-N-Learn Series
- May – Pecan Program -San Saba
Lunch-N-Learn Series
Pesticide Applicator Training
Spider Monitoring – Lake Brownwood
- June – Lunch-N-Learn Series
Kaki Weed Monitoring
Oak Wilt Monitoring
- July – Range/Brush Program
Lunch-N-Learn Series
TCAAA – Odessa
Kaki Weed Monitoring
Oak Wilt Monitoring
- August – Forage Campaign
Brush Demonstrations Evaluation
- September - Beef Cattle Program, San Saba
Fall Army Worm Monitoring
- October - Fall Army Worm Monitoring
TREAT – TSU, Stephenville
On-Line CEU Program - Coleman
- November - Feral Hog Program – Coleman

December 11, 2017
(Exhibit #3)

Weekly Ag News Column
2xWeekly Ag Radio Program, 30,000 listeners

Ongoing research through result demonstrations on weed control, brush control, prickly pear control.

Considerable effort this year was placed on forage production, weed and brush control.

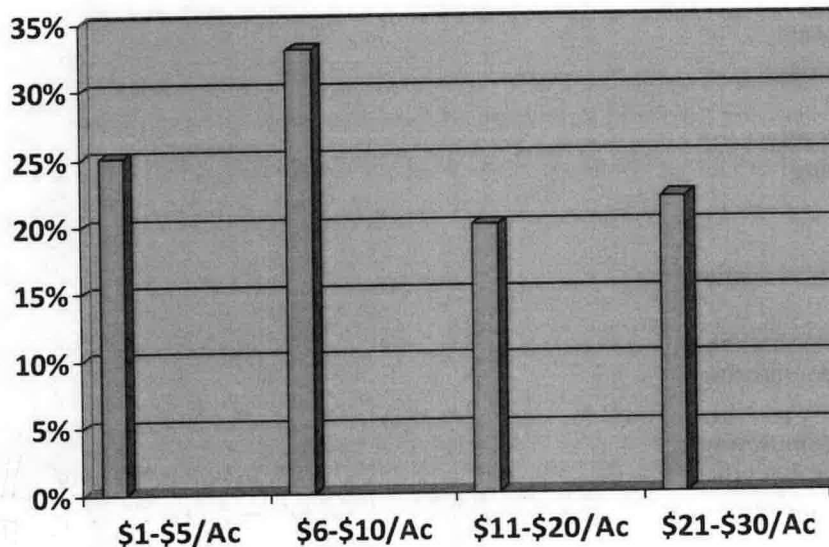
Emerging needs – Spiders in trees around Lake Brownwood, Oak Wilt, and Fall Army Worms.

As a result of Extension Educational Efforts:

- 91% of participants anticipate an economic benefit utilizing information from brush/weed programs
- 63% anticipate economic return for controlling brush of \$6-\$20/acre
- 90% of participants intend to utilize new herbicide traits for weed control in future
- 63% of participants already have pesticide applicator license
- 35% of participants indicated having such license was worth \$21-\$30/acre
- 67% of participants in livestock programs anticipated an economic benefit up to \$30/head, average \$14.74/head
- 100% of participants in horticulture programs indicated good-excellent understanding of landscape plant selection to better conserve water
- 60% will make changes in landscapes for energy conservation

Total economic benefit of participants \$1,300,600

ESTIMATED ECONOMIC VALUE



*Educational programs of the Texas A&M AgriLife Extension Service are open to all people without regard to race, color, sex, disability, religion, age, or national origin.
The Texas A&M University System, U.S. Department of Agriculture, and the County Commissioners Courts of Texas Cooperating*